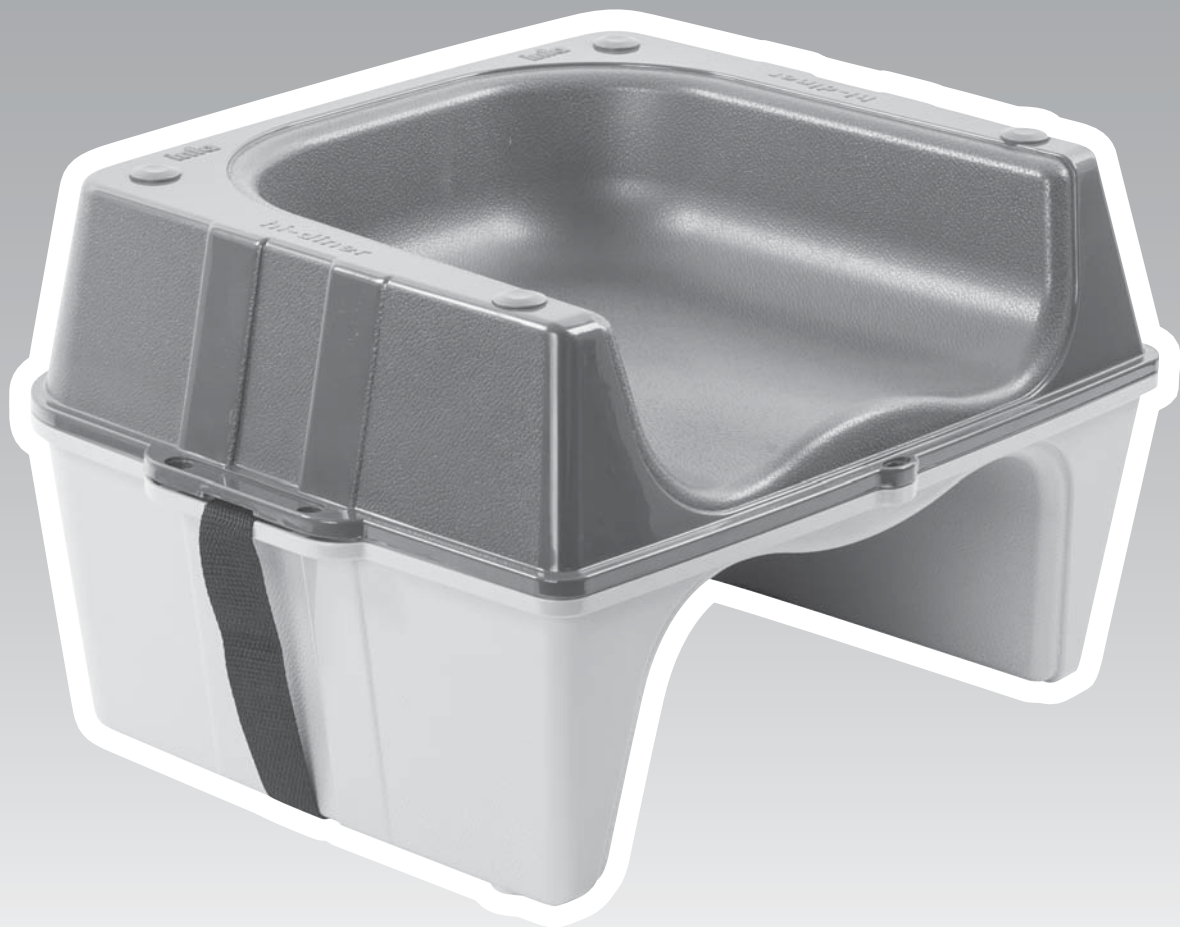


Hi Diner

MODEL# 429

Adjustable Booster Seat

INSTRUCTIONS



P.O. Box 487, Emu Plains NSW 2750
Service No: 02 4728 8090

IMPORTANT: Please read instructions carefully. Keep these instructions for future reference.

OPERATING INSTRUCTIONS

ASSEMBLY INSTRUCTIONS

1. Lay strap across base ensuring that it sits neatly in recesses on each side of the base (Fig. 2).
2. Place remaining seat base on top of first section with both fronts facing the same direction and align screw holes on each side. Screw 4 x long screws into holes provided on both sides of the seat (Fig. 3).
3. Screw remaining 1 x short screw into the hole at the front of the seat (Fig. 4).
4. Clip screw cover strips into place, on both sides of the seat (fig. 5).

Your booster seat is now ready for use



Fig. 1



Fig. 2



Fig. 3



Fig. 4



Fig. 5

SAFETY WARNINGS

Never leave child without adult attendance.

Ensure security strap is attached firmly to a stable chair which has a suitable surface area to seat the booster seat.

Ensure the chair is always on level, stable surface.

Check the booster seat regularly for any loose or worn parts, and if needed, contact the InfaSecure Customer Service Centre, for repairs or replacements, before further use.

InfaSecure Warranty Details

InfaSecure Pty Ltd warrants this product for twelve months from the date of purchase against failure due to manufacturing faults or faulty materials. Misuse, accidental damages, normal wear and tear are not covered by this warranty.

When used for commercial use the period is limited to six months.

“Our goods come with guarantees that cannot be excluded under the Australian Consumer Law. You are entitled to a replacement or refund for a major failure and for compensation for any other reasonably foreseeable loss or damage. You are also entitled to have the goods repaired or replaced if the goods fail to be of acceptable quality and the failure does not amount to a major failure.”